



## The Association of Minimally Invasive Gynecologic Surgeons

*...dedicated to safe, state-of-the-art surgery and health life-styles for women of all ages*

**R. Wayne Whitted MD, MPH**

**Paul A. Pietro MD**

**Marina Santana MMS, PA-C**

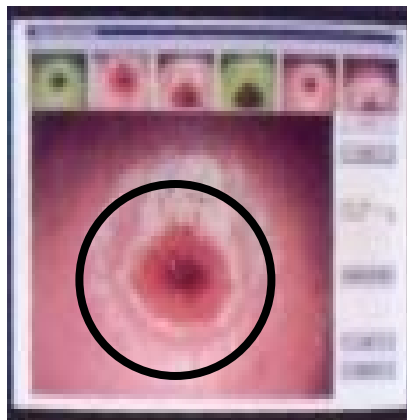
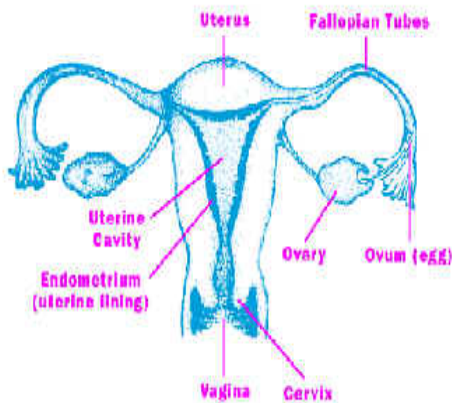
8740 N Kendall Dr. Suite 101

Miami, Florida 33176

Phone: 305-596-3744

## CONE BIOPSY Post-Operative Instructions

You have had a procedure referred to as a Cone Biopsy of the Cervix (opening of the womb). In this procedure a portion of your womb is removed.



It is normal to have a bloody discharge for several weeks after the procedure.

It is recommended that you:

1. Abstain from sexual intercourse for 3 (three) weeks after the procedure.
2. Minimize physical activities for 2 days.
3. No aerobics for one (1) week.
4. No tampons until your second period after this procedure.
5. Notify our office if you have heavy bleeding (changing a pad every hour), fever  $> 100.5$ , severe cramping

Thank you for taking care of your health!

Date: \_\_\_\_\_